

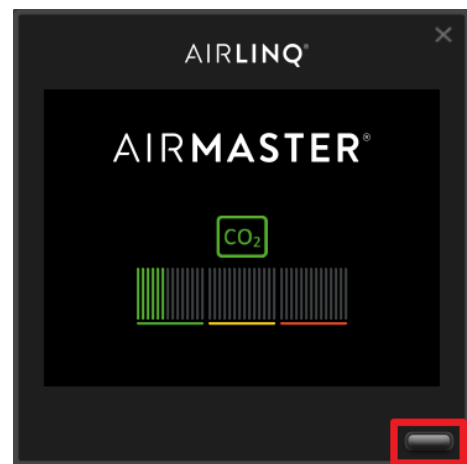
Serial number location

Indhold

User tool & Orbit panel.....	1
Service tool	3
AM150	6
AM300	7
AM300 (2020).....	8
AM500	9
AM800.....	10
AM900.....	11
AM1000.....	12
AM1200	13
DV1000.....	14

User tool & Orbit panel

1. Click on the menu bottom lower right corner



AIRMASTER

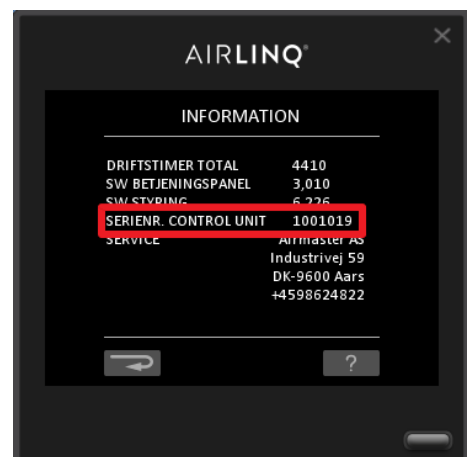
2. Scroll down and click on the status bar.



3. Click on information.

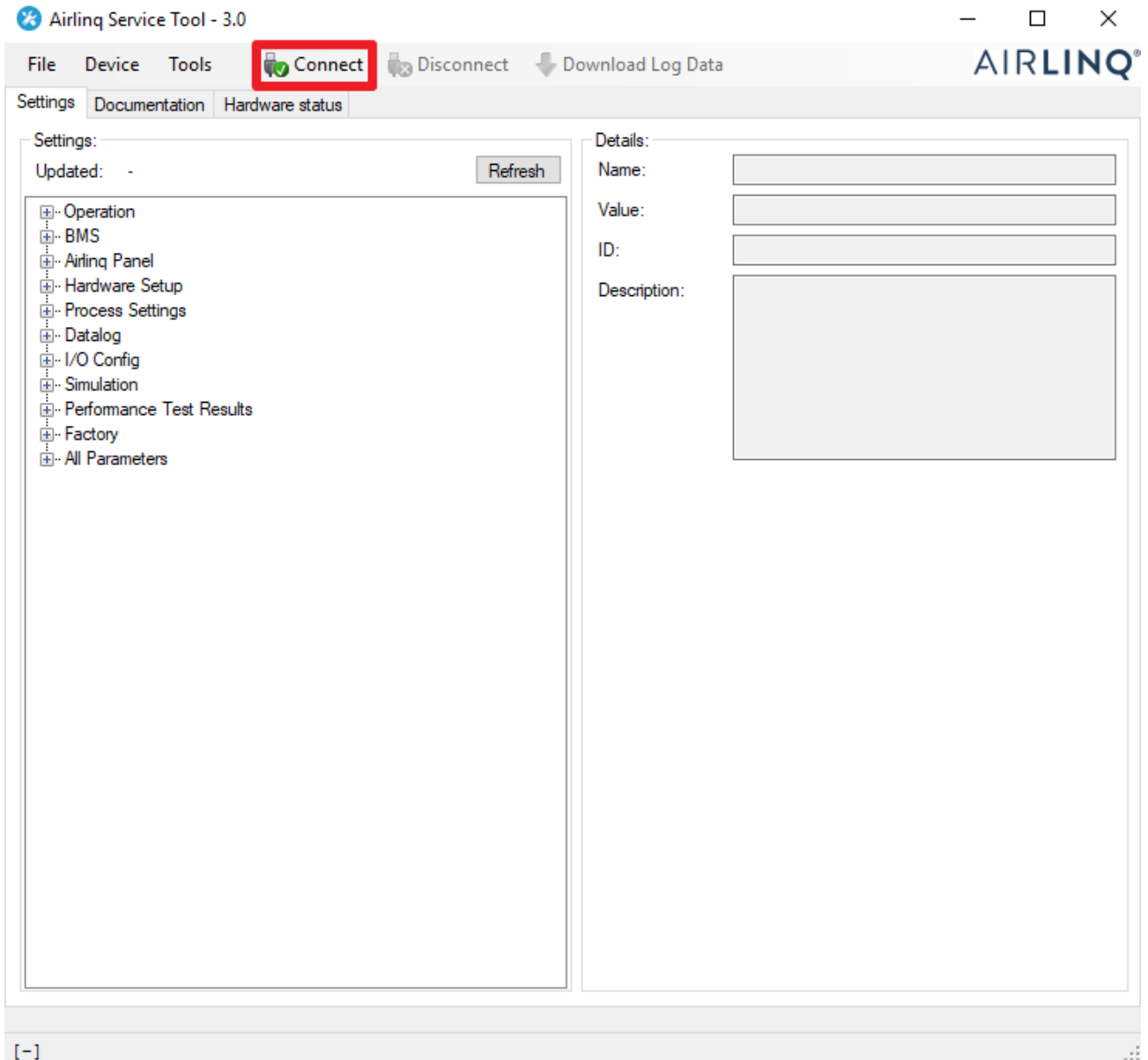


4. Locate the serial number here.

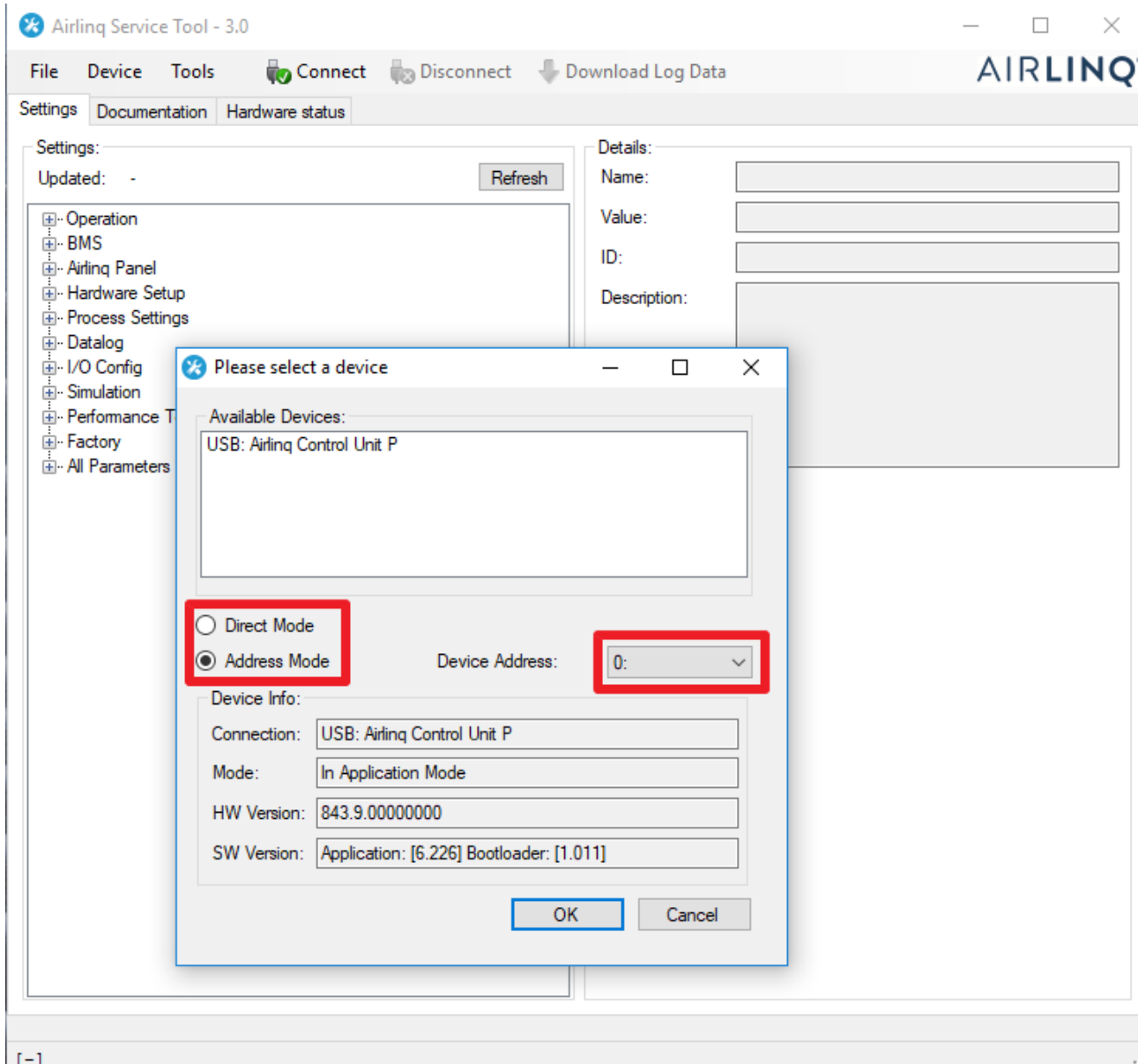


Service tool

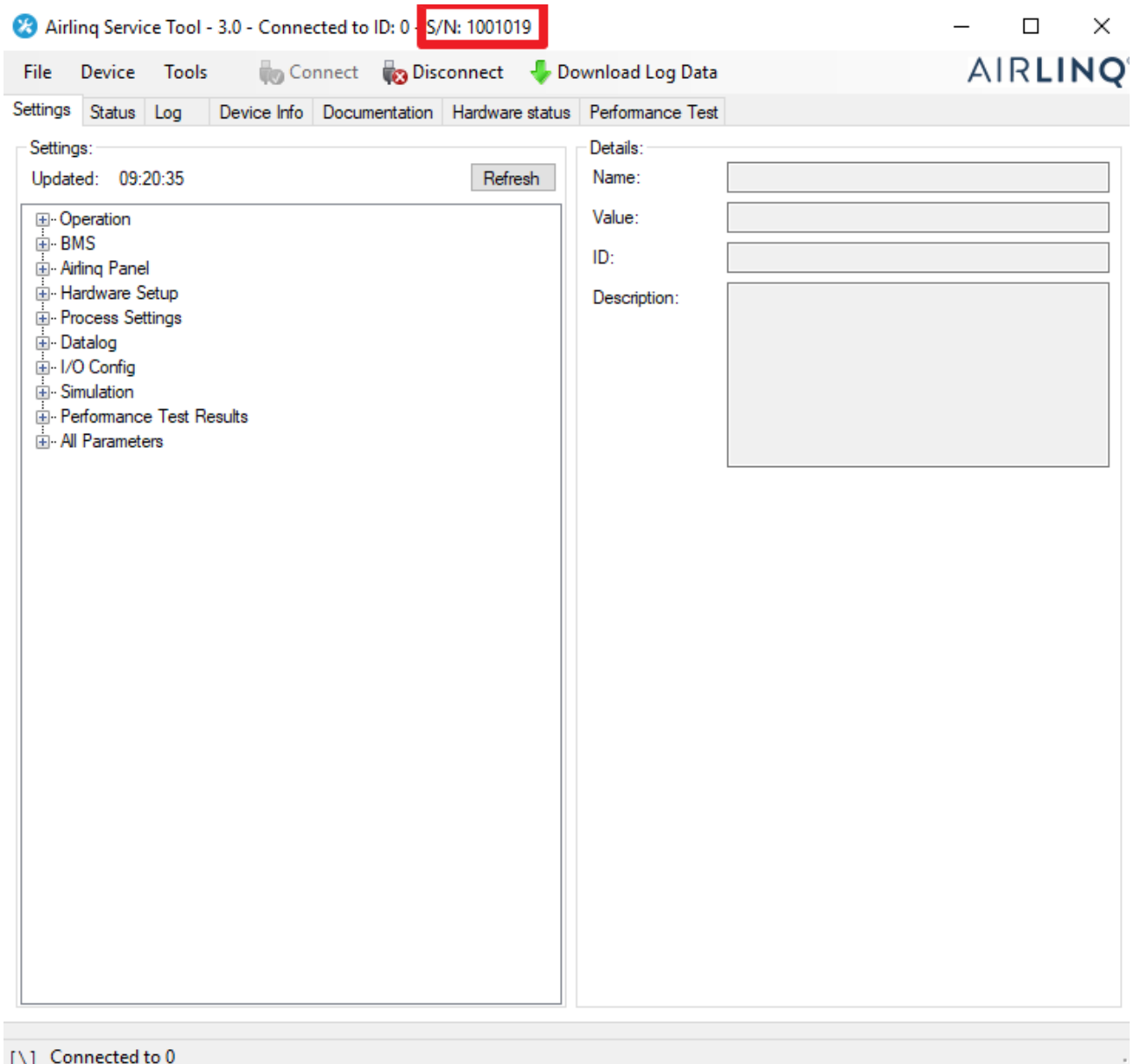
1. Open service tool and click connect.



2. Select how to connect (direct / address mode) and select the unit to connect to.

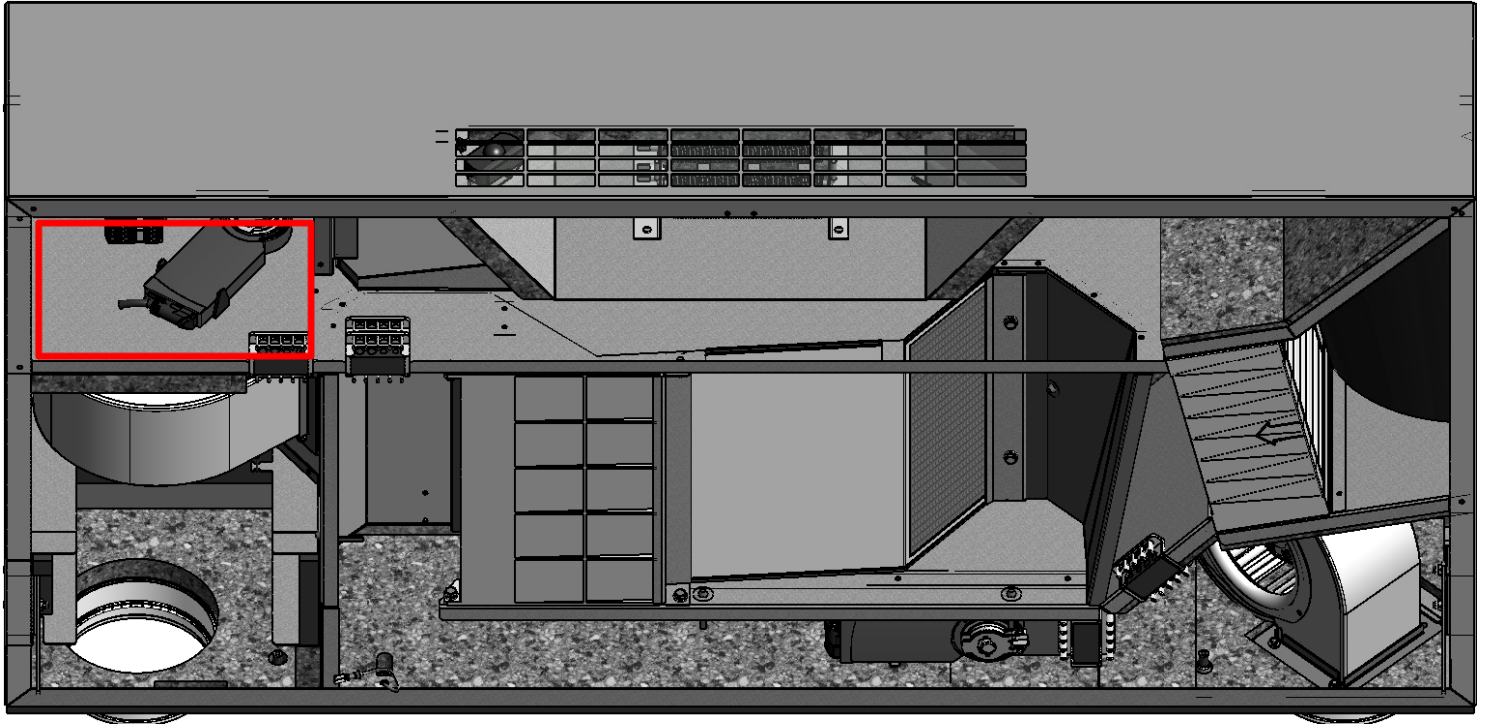


3. Once connected, locate the serial number at the top of Service tool.



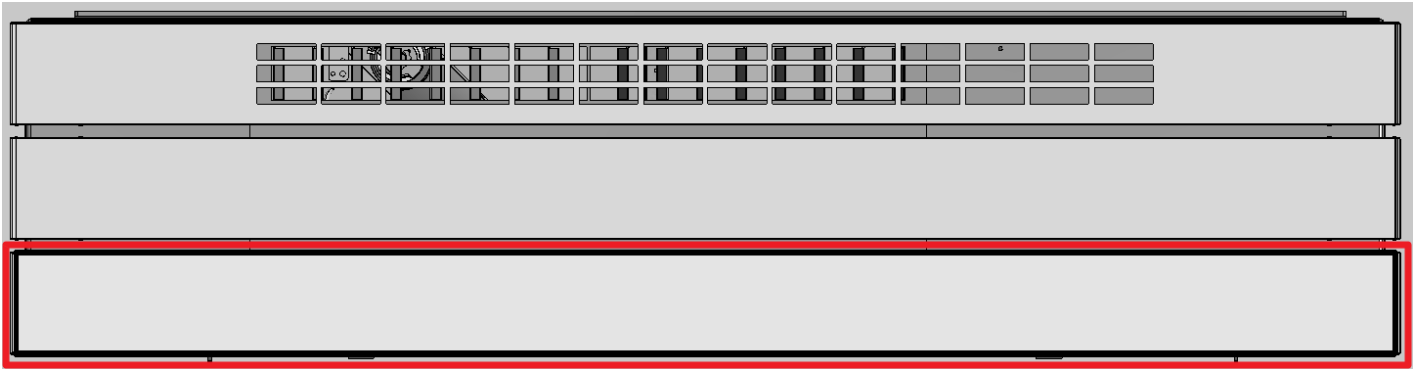
AM150

1. inside the unit, the serial number can be found near the units control box on the opposite plate.

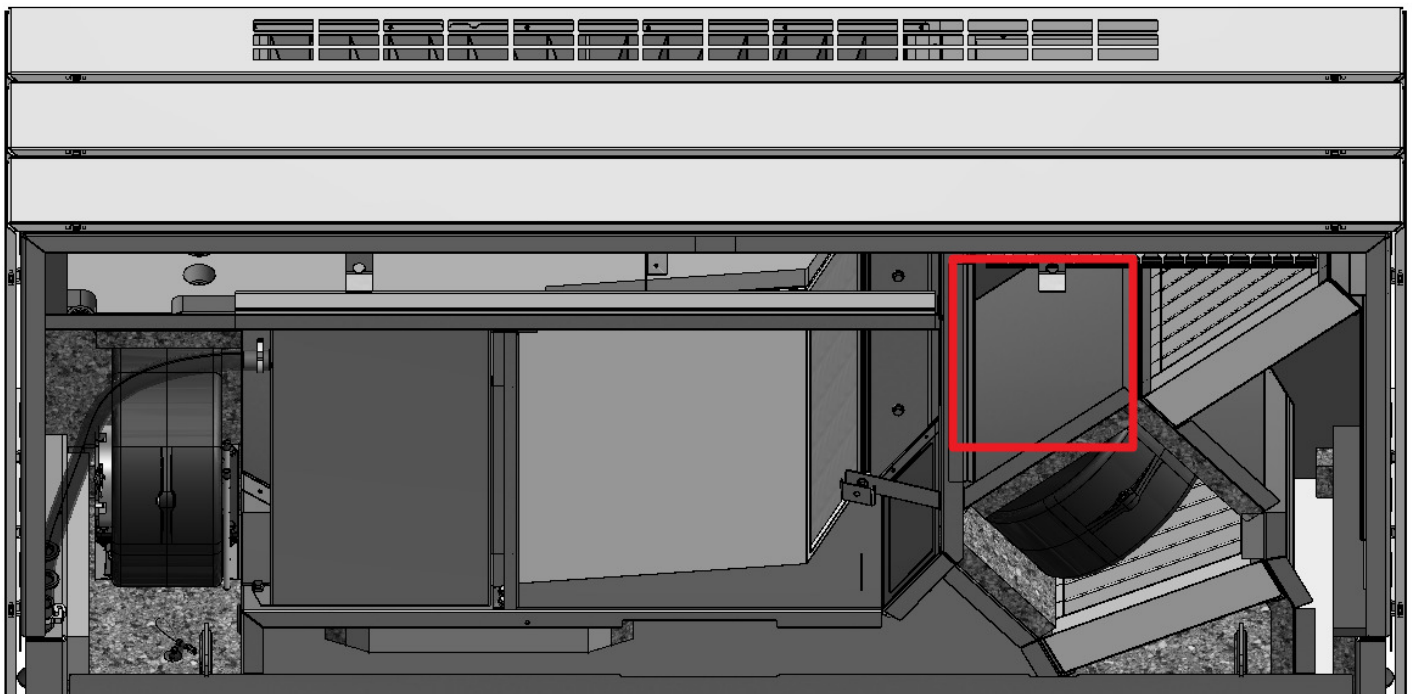


AM300

1. On the exterior of the unit the serial number can be found behind the lower front panel row.

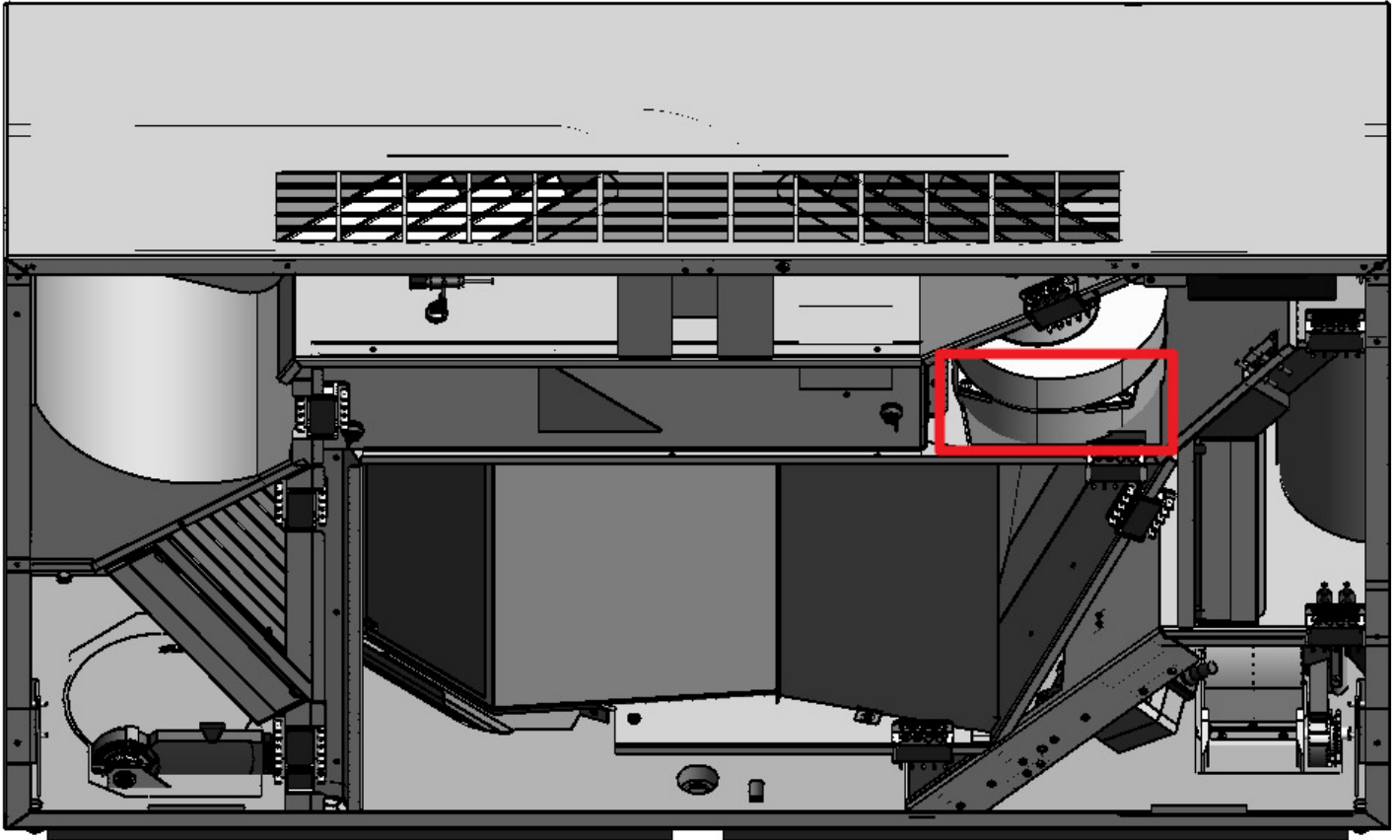


2. inside the unit, the serial number can be found near the units control box on the plate next to the extraction filter.



AM300 (2020)

1. inside the unit, the serial number can be found on the plate behind the inlet fan.

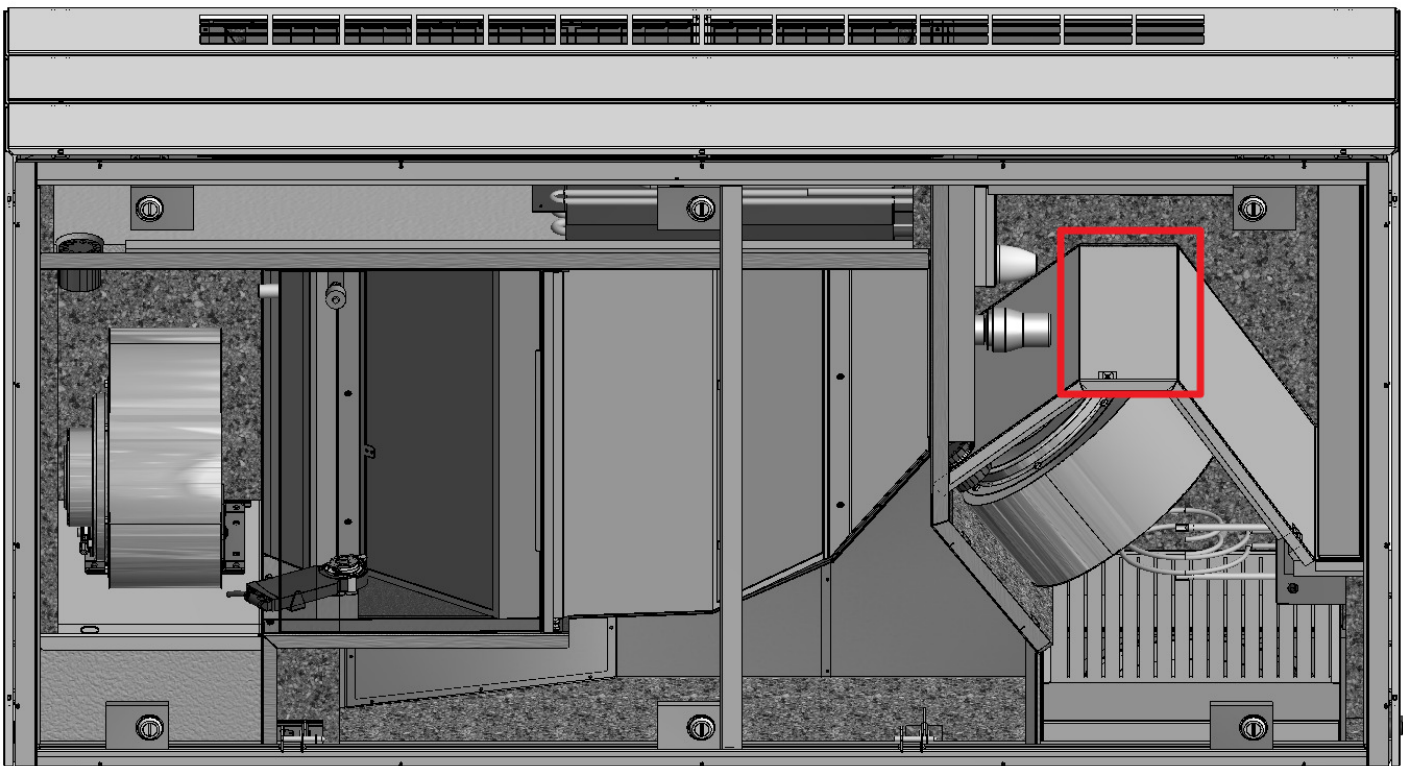


AM500

1. On the exterior of the unit the serial number can be found behind the lower front panel row.

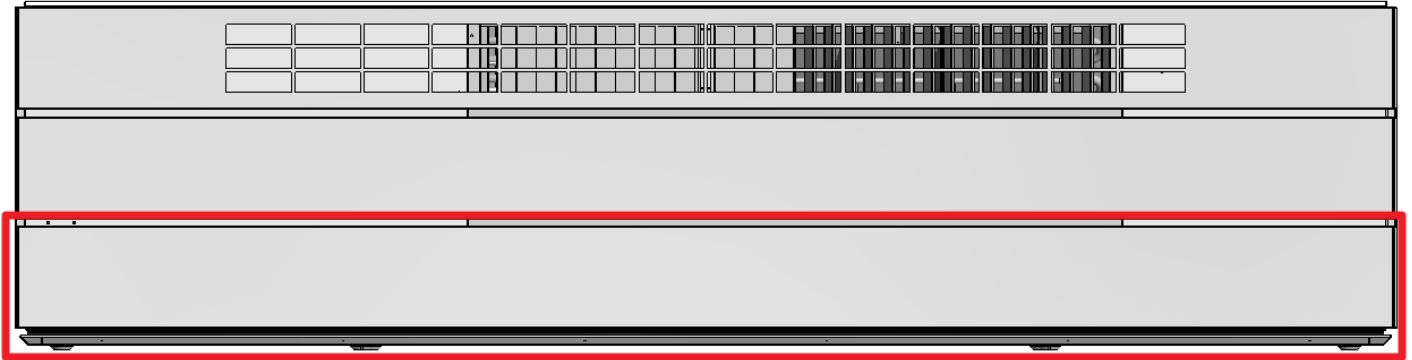


2. Inside the unit, the serial number can be found opposite the control box.

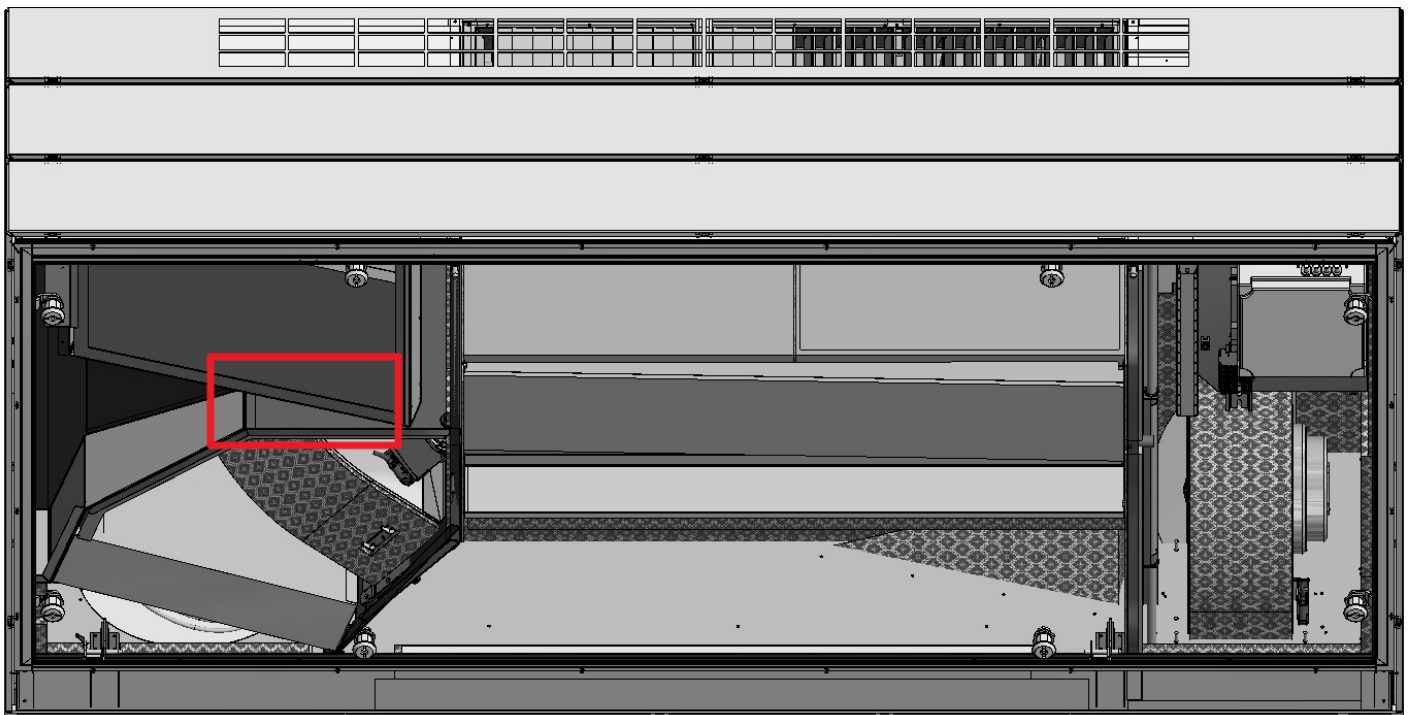


AM800

1. On the exterior of the unit the serial number can be found behind the lower front panel row

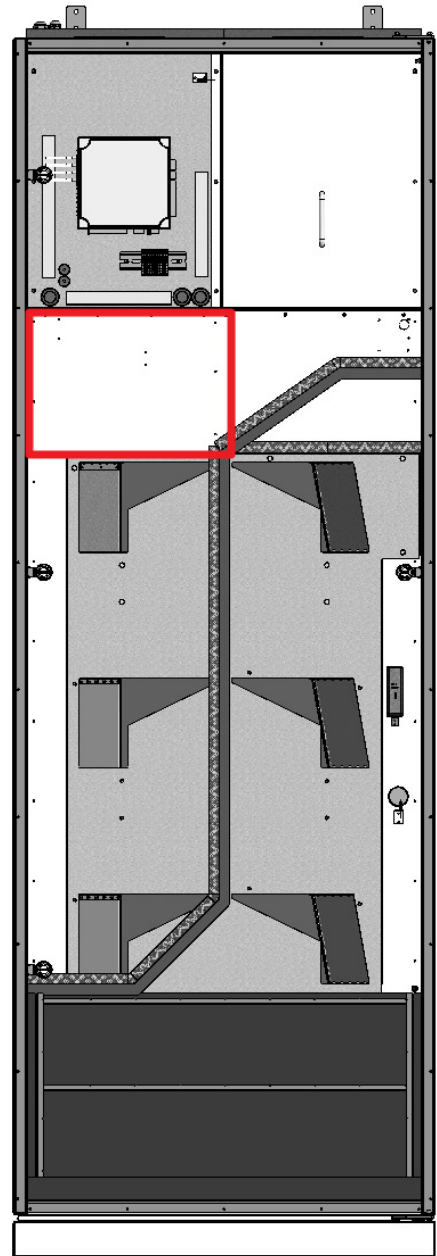
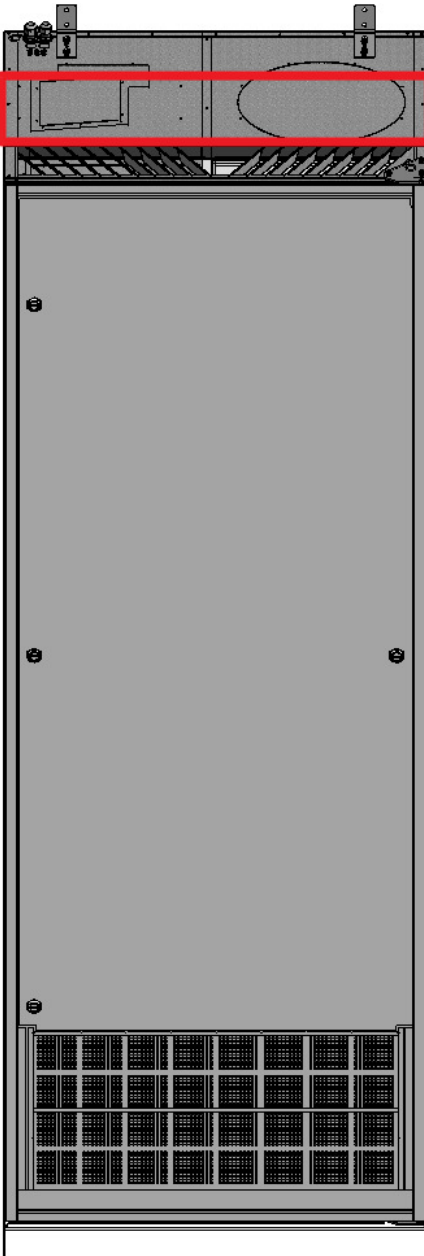


2. Inside the unit, locate the serial number on the plate towards the inlet fan next to the extraction filter.



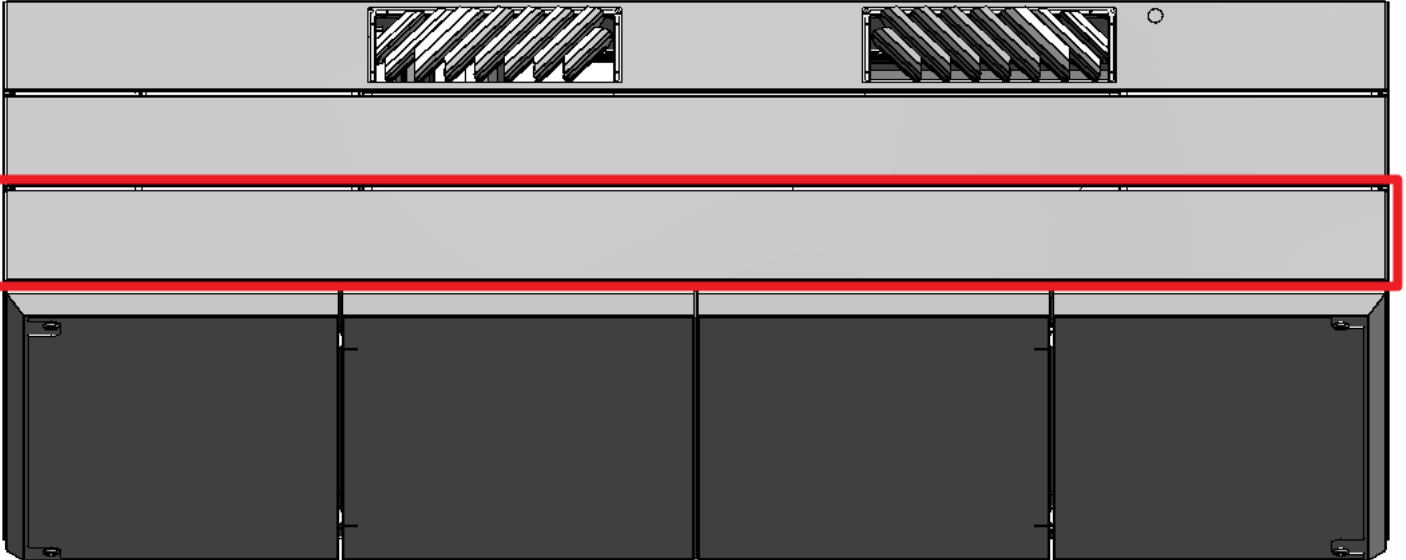
AM900

1. On the exterior of the unit, the serial number can be found on the top towards the front, behind the inlet grill.
2. On the inside, locate the serial number on the plate below the control box.

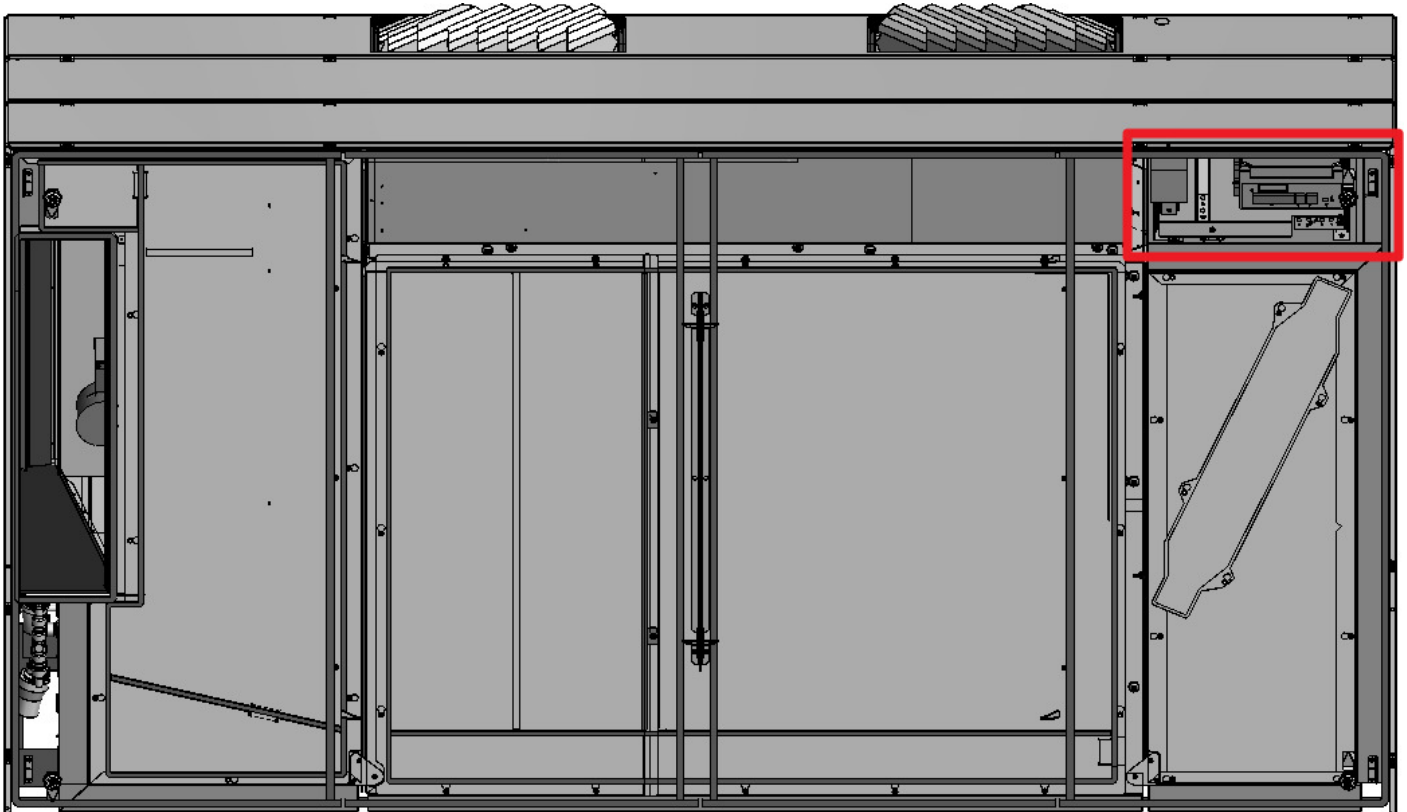


AM1000

1. On the exterior of the unit the serial number can be found behind the lower front panel row.

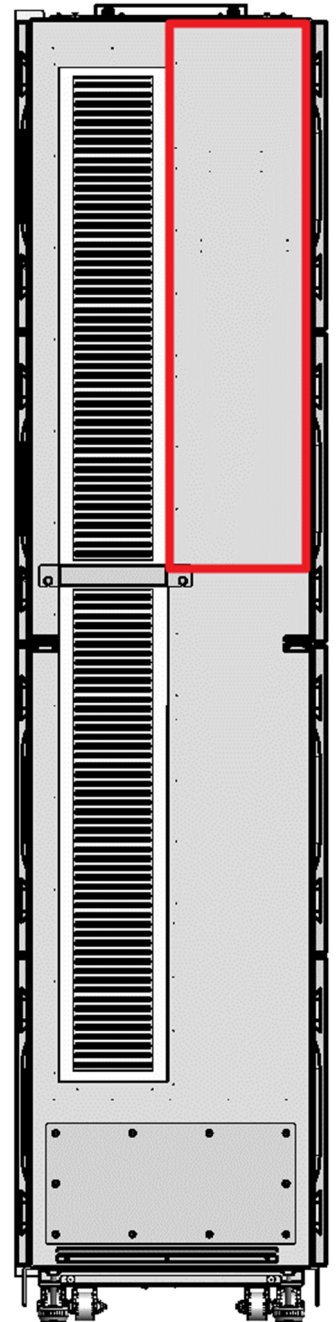
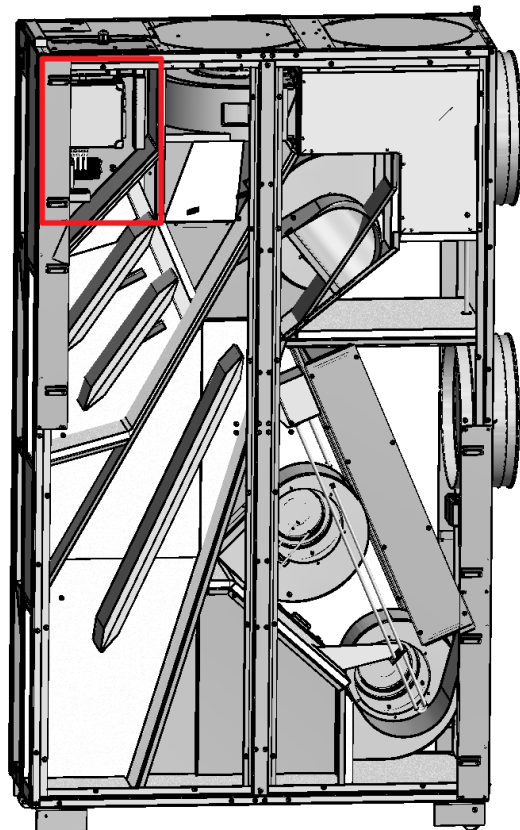
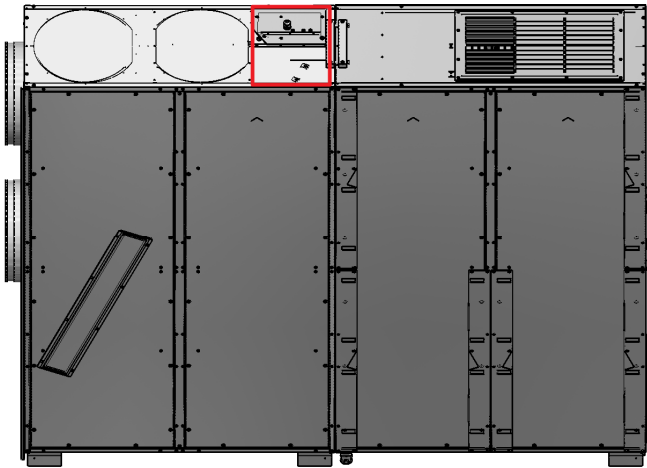


2. Inside the unit, locate the serial number on the same plate where you can find the control box.



AM1200

1. On the top of the unit, the serial number can be found near the electrical connection.
2. When the unit is separated, the serial number can be found on the exchanger section.
3. Inside the ventilator section, locate the serial number on the plate with the control box.



DV1000

1. Inside the unit, when the service hatches has been opened, the serial number can be located underneath the condensate tray near the condensate pump
2. Remove the lid for the junction box and locate the serial number label near the control box.

