

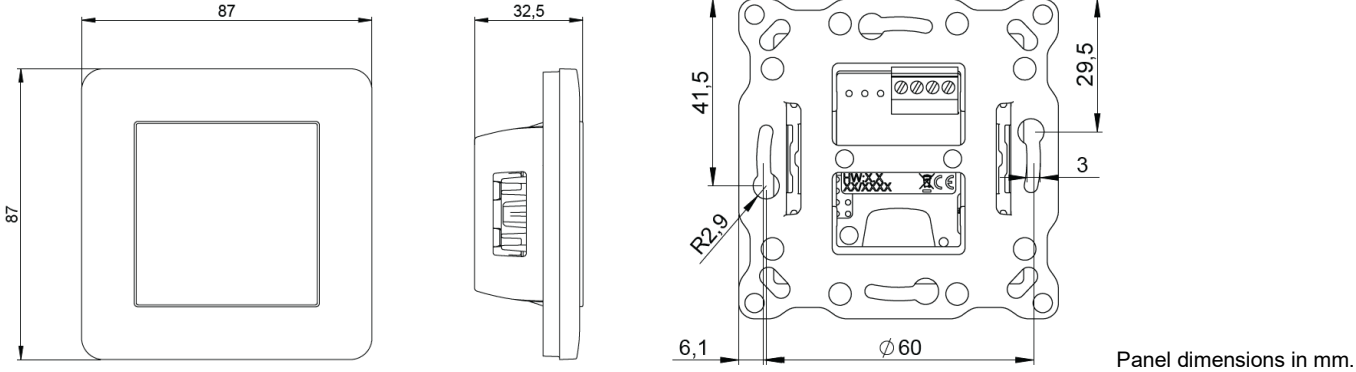
Airlinq® Axio panel



More Info

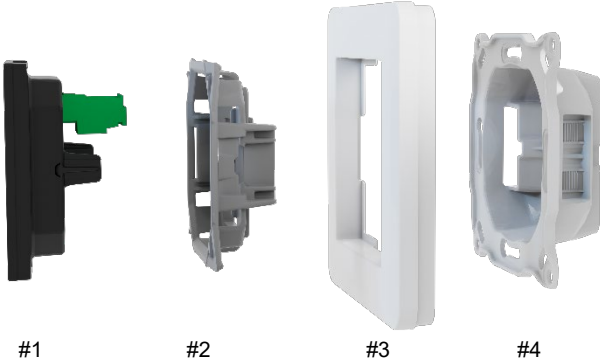
Included in box:

- 1 pcs. Panel
- 1 pcs. installation cable



You can mount the panel in an Airmaster back box, in a surface mounted back box, or in a flush-mounted back box. Either option is possible; ensure there is sufficient space for the installation cable at the rear. The box must be Euro 1-Gang size.

1 You need to disassemble the Airlinq® Axio panel before you can mount it. Use your fingers to pop out the display from the back to avoid damaging it.

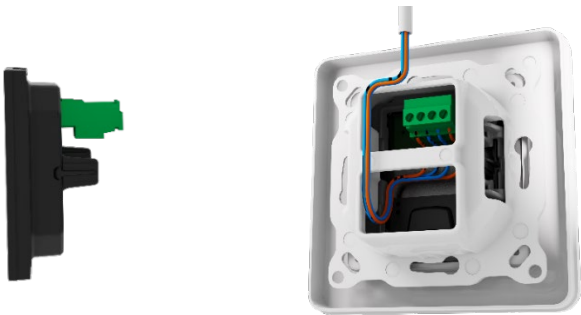


2 Pull the cable through parts #2, #3, and #4.

Please see overleaf for the electrical diagram. Connect the installation cable to the display. You can remove the screw terminal on the back of the display to simplify installation.

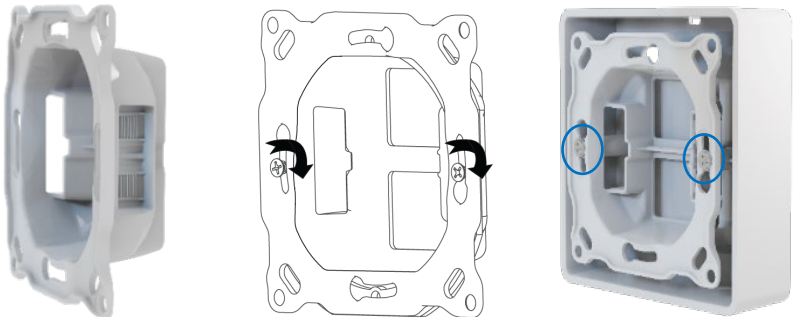
Strip the outer sheath of the installation cable just inside the box, and secure it with a strip for strain relief.

Take care not to bend the cable too much within the back box



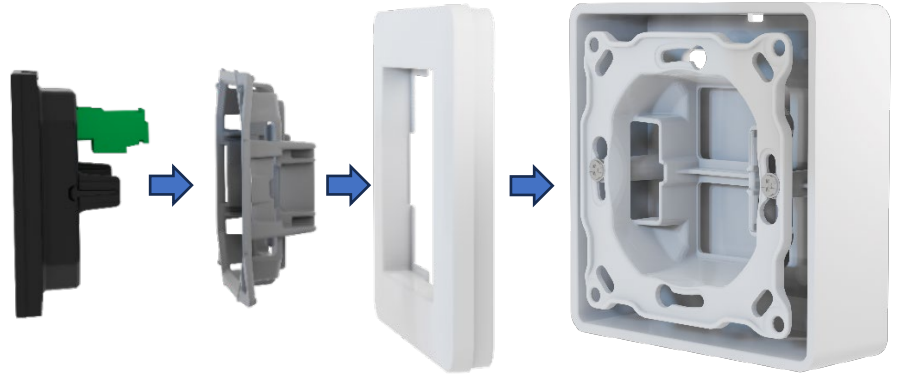
3 Mount the back frame into a back box using 2 screws. Twist the frame and tighten the screws to keep the frame locked in place.

(shown here mounted in an Airmaster surface mounted back box).




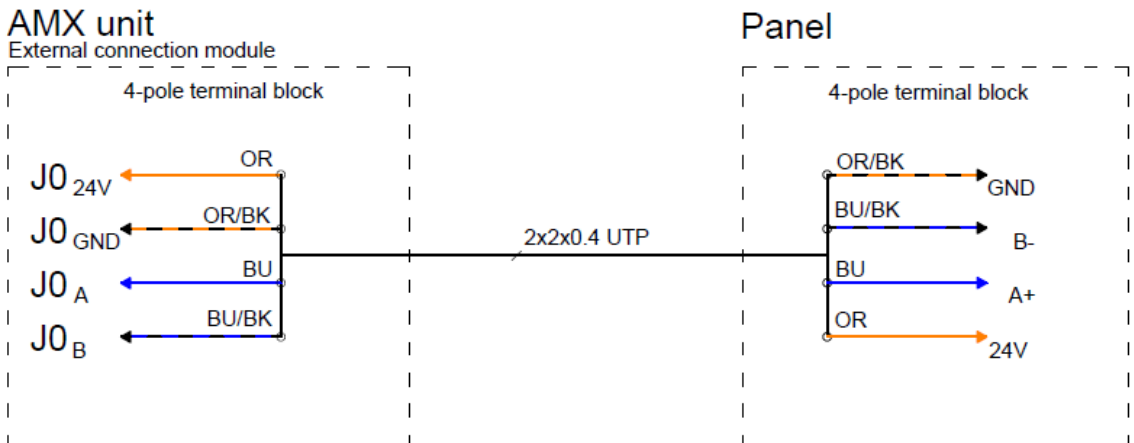
4

Assemble the panel.



Electrical diagram

WARNING	
	<ul style="list-style-type: none">• Electrical installations may only be carried out by an authorized electrician.• The power supply must be switched off for all connections or service work.• Make sure nobody turns the power on (prevent use).• The installer must follow local rules and standards.



Connect the 24 V (DC) signal from terminal J0-1 to 24V on the panel (orange wire).

Connect J0-2 to GND on the panel (orange/black wire).

Connect J0-3 to A+ on the panel (blue wire).

Connect J0-4 to B- on the panel (blue/black wire).