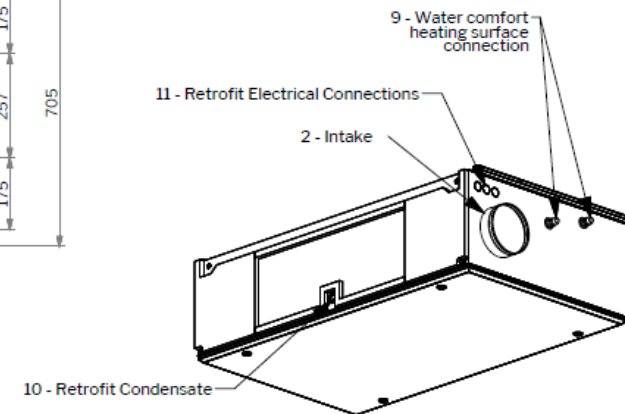
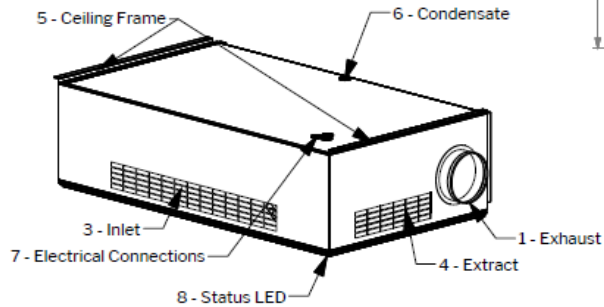
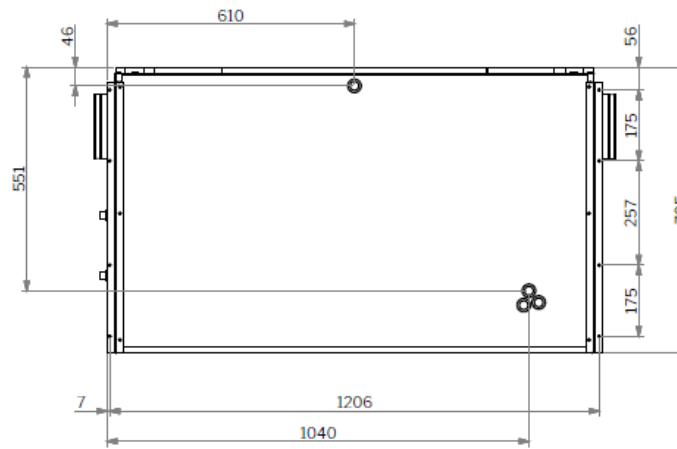
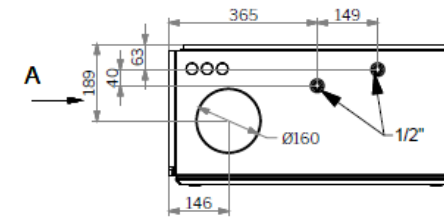
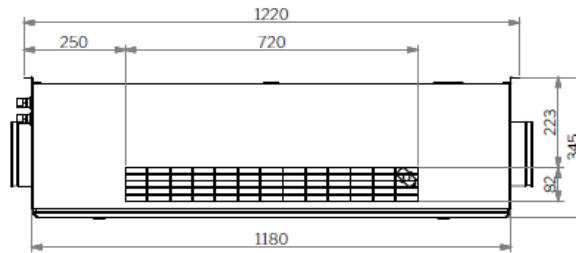
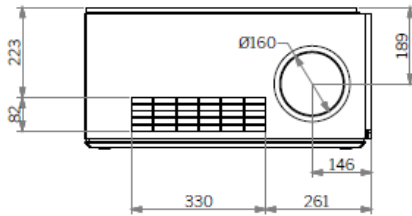
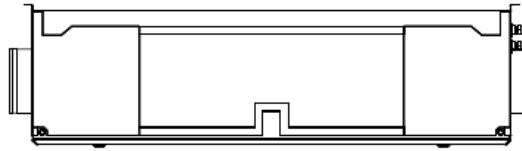


# AM 300 SSBB – CF

# AIRMASTER

A



Measures in mm.

2026-01-16

DWG.:1028018

|    | DK                            | NO                           | SE                                | DE                                 | NL  | FR                                   |
|----|-------------------------------|------------------------------|-----------------------------------|------------------------------------|---|--------------------------------------|
| 1  | Afkast                        | Avkast                       | Avluft                            | Fortluft                           | Afvoer  | Air rejeté                           |
| 2  | Indtag                        | Inntak                       | Intag                             | Außenluft                          | Toevoer   | Air extérieur                        |
| 3  | Indblæsning                   | Tilluft                      | Tilluft                           | Zuluft                             | Inblaas   | Air soufflé                          |
| 4  | Udsugning                     | Avtrekk                      | Frånluft                          | Abluft                             | Afzuiging                                       | Air repris                           |
| 5  | Vægramme                      | Veggramme                    | Väggram                           | Wandrahmen                         | Muurframe                                       | Cadre à fixation murale              |
| 6  | Kondens afløb                 | Kondensavløb                 | Kondensavlopp                     | Kondensatablauf                    | Condensafvoer                                   | Évacuation condensats                |
| 7  | EI-tilslutning                | EI-tilkobling                | Elektrisk anslutning              | Elektrischer Anschluss             | Elektrische aansluitningen                      | Raccordement électrique              |
| 8  | LED                           | LED                          | LED                               | LED                                | LED   | DEL                                  |
| 9  | Vandeftervarme flade          | Vannvarmebatteri, komfort    | Vattenburet eftervarmebatteri     | Wassernachheizregister             | Naverwarmingsbatterij op water                  | Batterie à eau chaude de confort     |
| 10 | Eftermontering Kondens afløb  | Ettermontering Kondensavløb  | Eftermontage Kondensavlopp        | Nachrüstung Kondensatablauf        | Achteraf te plaatsen Condensafvoer              | Rééquipement Évacuation condensats   |
| 11 | Eftermontering EI-tilslutning | Ettermontering EI-tilkobling | Eftermontage Elektrisk anslutning | Nachrüstung Elektrischer Anschluss | Achteraf te plaatsen Elektrische aansluitningen | Rééquipement Raccordement électrique |

# AIRMASTER